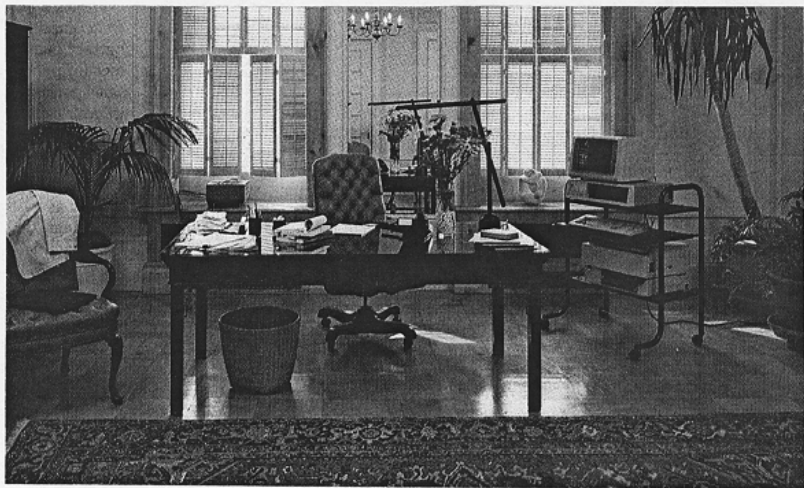


WORKING WOMAN



WHEN WORK BEGINS AT 4 AM

For Graciela Chichilnisky, 14-hour days are the norm. As co-founder and CEO of FITEL, Ltd., a company that links the computers of securities traders worldwide, she keeps the hours of the international stock markets—which can mean rising at 4 AM to meet the London opening. The office she has set up in her New York townhouse gives her the flexibility she needs to work around the clock. Thanks to her computer-modem combo and fax machine, she can be in constant touch with her London and Tokyo offices.